

venture



MULTIPURPOSE — PROFESSIONAL GRADE

EXTENDED OPERATIONS

- ⇒ Enclosed ruggedized body for harsh environment
- ⇒ Extended flight time — up to 100 acres aerial mapping coverage per flight*
- ⇒ Full Autonomous Navigation capabilities
- ⇒ Multiple payload capabilities including NIR sensors, gimbals etc.
- ⇒ Aerial mapping mission planner included
- ⇒ Full system compatibility with WaveSight fixed-wing platform
- ⇒ Advanced vibration reduction system

* under optimal flight conditions



CONFIGURATIONS

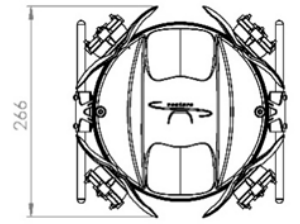
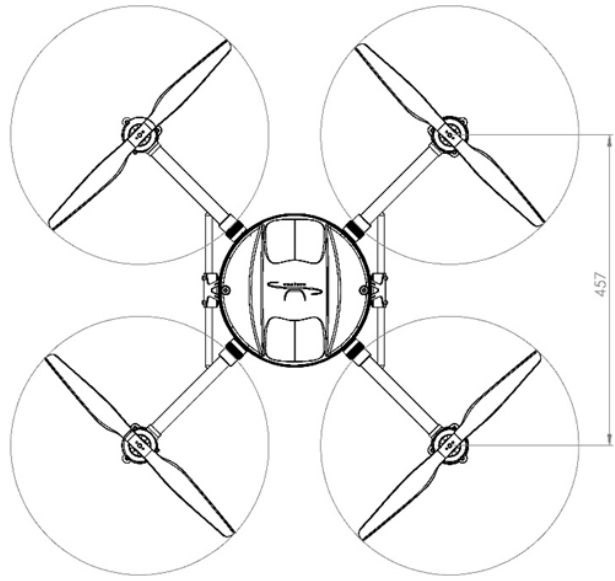
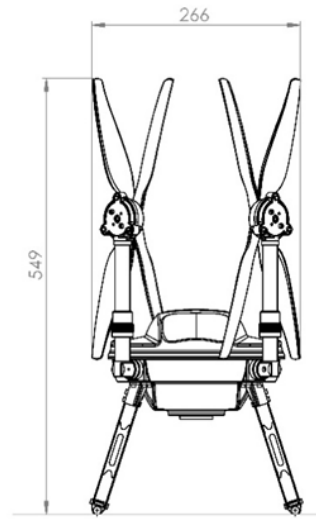
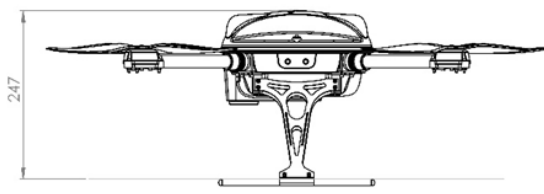
Venture Outrider

GPS assisted flying
Geotagged video and stills
Pitch/roll compensated camera

Venture Surveyor

20 Mpx visible camera for aerial mapping
20 Mpx NIR camera for aerial mapping
Fully stabilized camera turret with 20x optical zoom for SAR and emergency application

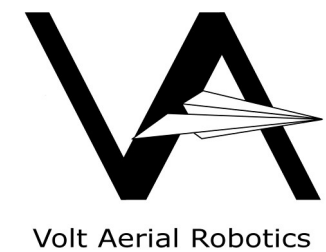
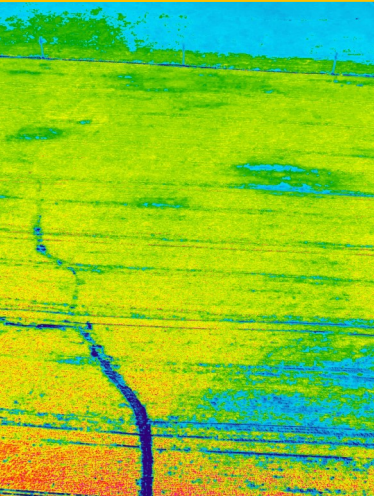
CUSTOM CONFIGURATIONS ON DEMAND



Features		
Overall dimensions (ready to fly)	mm / ft	838*838*247 / 2.75*2.75*0.81
Overall dimensions (folded)	mm / ft	549*266*266 / 1.8*0.87*0.87
Max. T.O. weight	kg / lbs	3.0 / 6.61
System weight	kg / lbs	~2 / 4.4

Performances		
Cruise speed (typ.)	kph / kts	30 / 16
Wind speed	kph / kts	35 / 19
Flight endurance	min	Outrider - 15 (optimal conditions) Surveyor - 30 (optimal conditions)
Standard data link range	Km / NM	Outrider - 1 / 0.6 Surveyor - 10 / 5.4

(*extended range option available)



Volt Aerial Robotics llc
 Info@voltaerialrobotics.com
 www.voltaerialrobotics.com
 +1636-410-0191



✓ 100% compatible

